

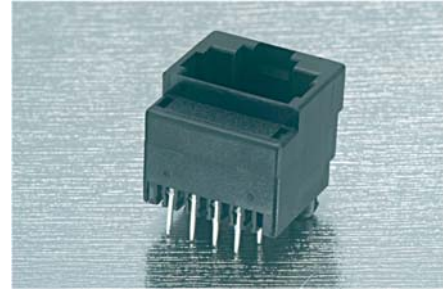


CONNECTORS MANUFACTURE

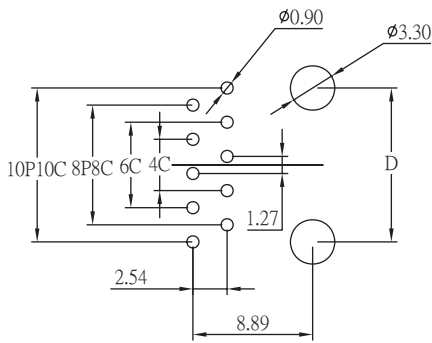
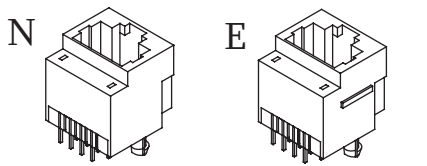
MODULAR JACK TOP ENTRY H=15.7 W=15.0

MATERIAL & FINISH

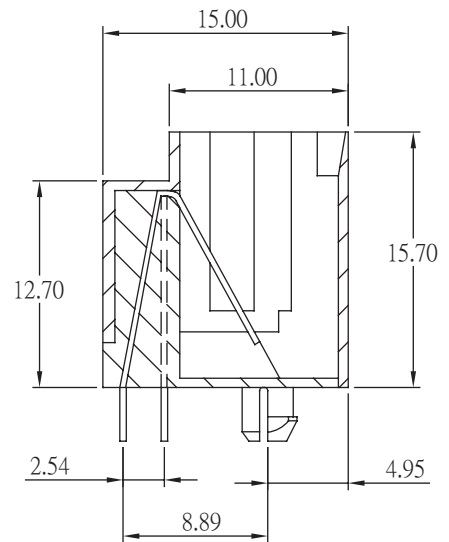
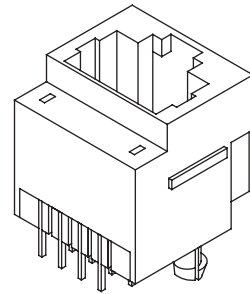
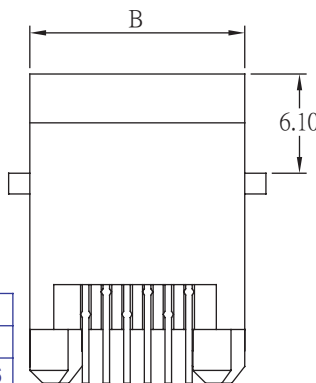
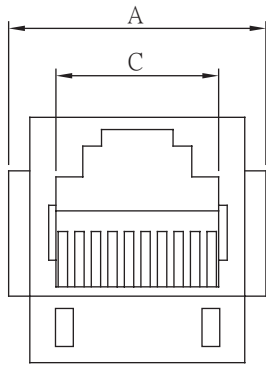
HOUSING: Glass Fiber, PBT. UL94V-0, BLACK
 CONTACT: 0.35x0.42 mm thickness phosphor bronze,
 Gold plated over Nickel on contact area,
 Tin plated over Nickel on solder area.



MODULAR JACK



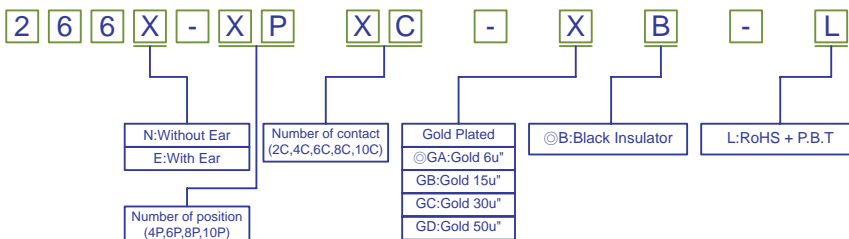
Recommended PCB Layout
(PCB TOLERANCE ±0.05)



position	conductor	A	B	C	D
4P	4C	13.80	11.20	7.90	7.62
6P	2C/4C/6C	15.80	13.20	10.00	10.16
(8P)6P	2C/4C/6C	18.00	15.20	10.00	11.43
8P	8C	18.00	15.20	11.80	11.43
10P	10C	18.00	15.20	11.80	11.43



ORDER INFORMATION



©:Standard Recommend

AMTEK CONNECTOR MANUFACTURE